



AiRISTA RTLS Platform

Real Time Locating System (RTLS):

AiRISTA's RTLS platform integrates several popular technologies including RFID, RSSI, TDOA and GPS with two patented location determination technologies to provide one of the leading indoor and outdoor location tracking solutions available in today's marketplace.

Wi-Fi RTLS - RSSI Location Engine:

Suitable for usage indoors, makes use of the Wi-Fi infrastructure and relies on the measurement of the signal strength to determine location of tagged assets and personnel based on patented technologies.

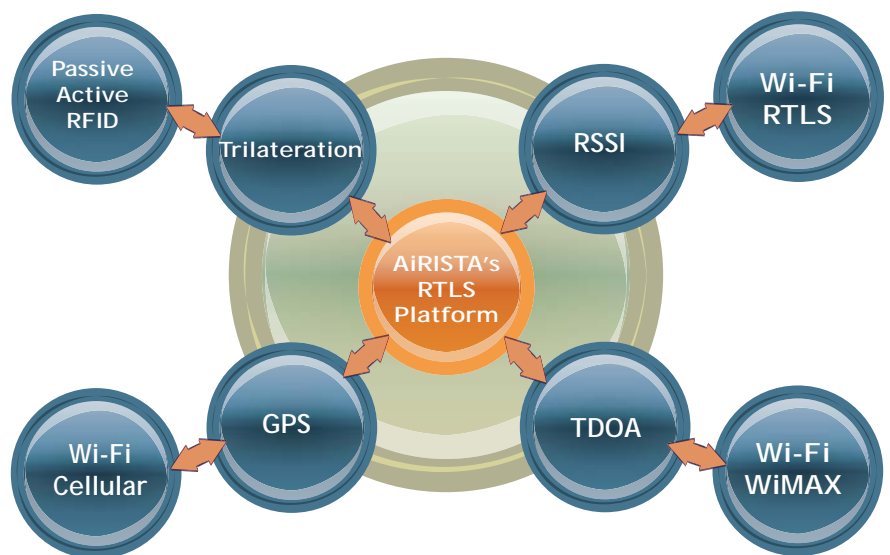
RTLS - GPS Location Engine

Suitable for outdoor usage, relies on latitude and longitude coordinates acquired from satellites to determine location of tagged assets and personnel. Devices may use a Wi-Fi or a Cellular network to transmit information for processing.



AiRISTA develops and delivers a wide range of turn-key solutions incorporating RFID, RTLS, GPS and related technologies that enables real-time management of mobile personnel, assets and resources to government and commercial clients. With our robust and comprehensive Track and Trace solutions, clients realize a reduction in resources, cost and errors while benefiting from increased efficiencies, productivity, safety and revenues.

Location Engines are software components that communicate with tags and location sensors to determine the location of tags and report it to middleware and applications. Different technologies use different approaches, and each approach solves a slightly different problem or supports different applications. Current RTLS solutions rely on a single technology for location determination and can offer accuracy levels of several to tens of feet in best case scenarios. AiRISTA's RTLS platform marries several popular technologies including RFID, RSSI, TDOA and GPS with two patented location determination technologies to provide one of the leading indoor and outdoor location tracking solutions available in today's marketplace. In many cases the level of accuracy is less than six feet.



((Benefits of AiRISTA Technologies)))

Accuracy levels provided by AiRISTA's RTLS technologies provide effective solutions for applications demanding real-time location tracking indoor and outdoor.

- Sensors may be incorporated into various types of tags to gain information about the environment and status of the tagged individuals or assets.
- Addition of the optional RTLS Business Rules allow for enforcing inclusion/exclusion and dynamic zones and schedule based tracking.
- Additional optional Track & Trace features for playback based on captured historical data empower users to optimize business processes, increase asset utilization and increase personnel safety.

RTLS Platform

- AiRISTA's Wi-Fi TDOA can operate simultaneously with the Wi-Fi RSSI Radio Map technology without operational interference.
- AiRISTA's Wi-Fi TDOA tags may be used for both, AiRISTA's TDOA as well as the RSSI Radio Map location determination technologies. Further, these tags support a third mode of operation, allowing for deployments of a hybrid of both technologies.
- Enterprise release of the software brings about the ability to fuse data from tags and on-board sensors to manage enterprise assets and personnel at multiple sites through a single web-based console.

Technology	Accuracy ft.	Environment	Infrastructure	Requires Survey
RSSI-Patented	< 7 - 95%	Indoor and Outdoor	WiFi, Active RFID	Yes
TDOA-Patented	< 1 - * < 5 - **	Indoor and Outdoor	WiFi, WiMax, RF, Active RFID	NO
GPS	< 6 - 90%	Outdoor	N/A (cellular & satellite)	NO

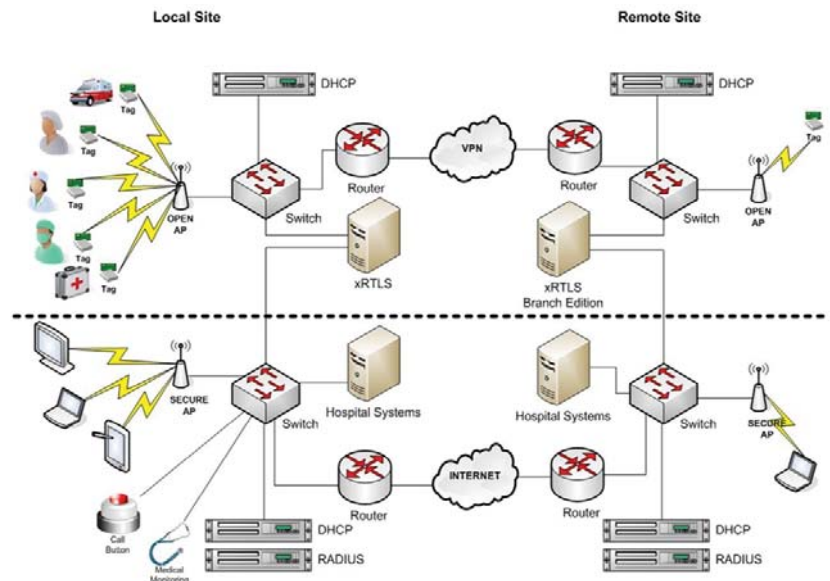
* with specialized types of tags
 ** with standard tag

((Applications))

Tracking & Tracing Assets -
 Locate assets on demand, track and protect, monitor usage and improve utilization, trace, manage and plan inventory, identify and address bottlenecks in business processes, streamline operations, improve workflows.

Tracking & Tracing People -
 Locate healthcare personnel on demand, locate patients and residents in senior care or assisted-living facilities, address safety measures in case of an emergency, trace

personnel movement and enforce workers' safety, trace personnel contacts to address control measures in case of a viral outbreak and pandemic, address regulatory requirements in business environment such as day care centers, track event attendance and participation, locate first responders and determine their status in harsh environments and dangerous conditions, address students' safety while being transported etc.



913 Ridgebrook Road
 Suite 110
 Sparks, MD 21152
 Voice: 410 878 2700
 Fax: 410 878 2561
 E-mail: info@airista.com
 www.airista.com